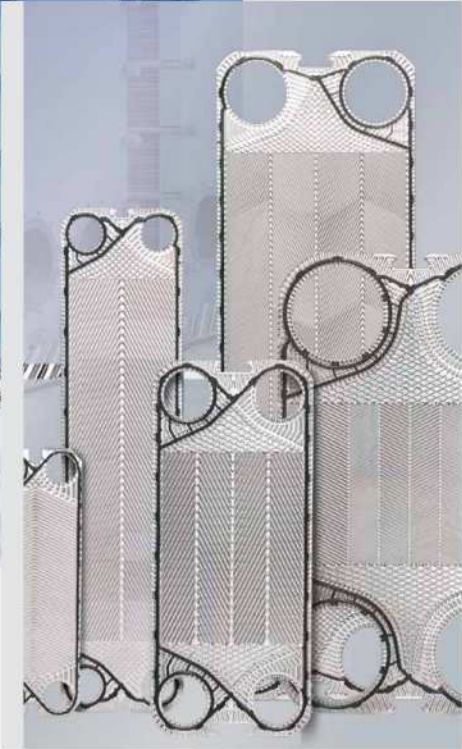
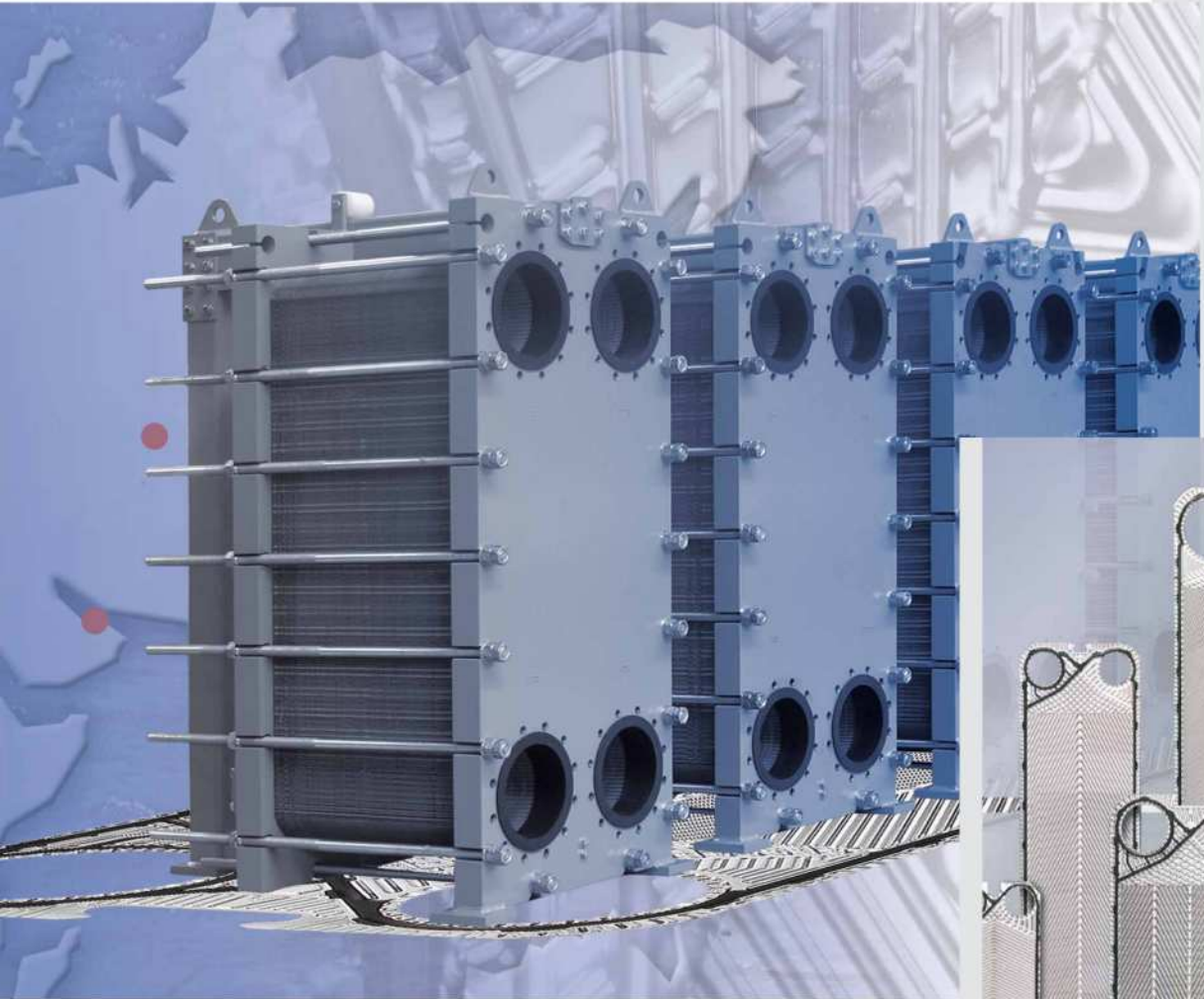


# plate heat exchangers for industrial applications

plate heat exchangers

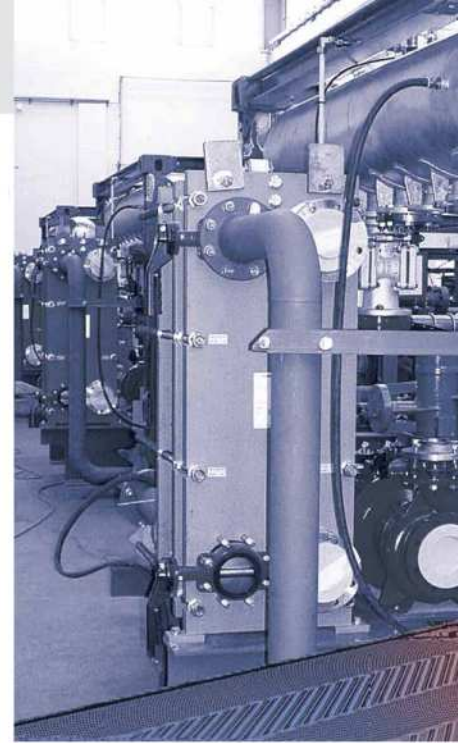


## Plate Heat Exchangers

Series: MDT-Funke

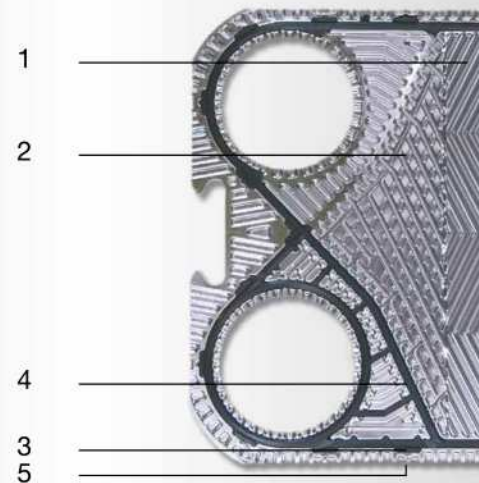
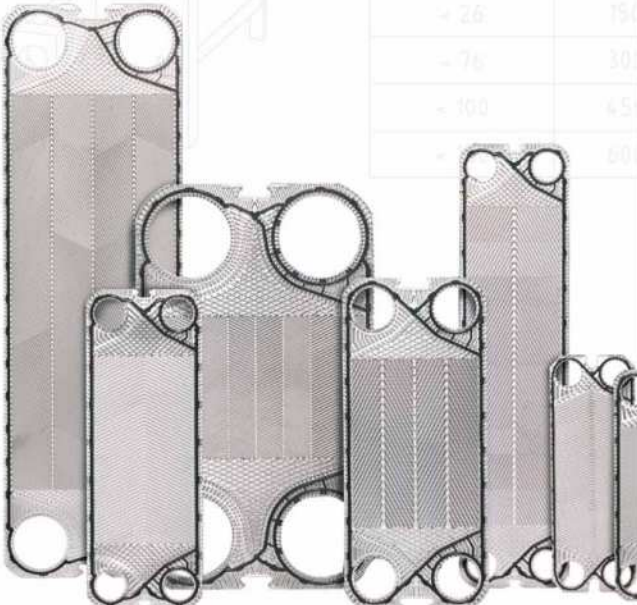
**mdt**

[www.mdtco.com](http://www.mdtco.com)



### Short overview of plate and gasket:

- very high heat transfer rates due to thermodynamically optimized design
- corrugation fields with "Off-Set" embossing allow for symmetrical and asymmetrical flow gaps (1)
- specially embossed entry fields for an optimum distribution of media (2)
- gaskets fastened by "Clip-system" for easy maintenance
- gaskets have a special ribbed surface, enabling more exact centring and stabilization of the entire plate pack (3)
- double gasket with leakage groove between two media, preventing mixing of the media (4)
- special plate profile at the edges, reinforcing the plate pack and ensuring high pressure resistance of the gasket during operation (5)



## Technical data

### Plate material

As standard, MDT-FP heat transfer plates are produced in 1.4404 / AISI 316L. Due to the high content in molybdenum, this material is generally more corrosion-resistant and more resistant to chloride damage than 1.4301 / AISI 304.

Optionally, the following additional materials may be used:

- 1.4301 / AISI 304 (cost-effective for use with uncritical media)
- 1.4539 / AISI 904L (with high nickel content to avoid stress corrosion cracking; good price/performance ratio when media with a low acid and chloride content are applied)
- 1.4547 / 254 SMO (higher chloride and acid-resistance than 1.4404 / AISI 316L)
- Alloy C276 (highly resistant against acids and chlorides; e.g. for concentrated sulphuric acid)
- Titanium ASTM B 265 Grade 1
- Titanium-Palladium ASTM B265 Grade 11 (highest material quality; appropriate e.g. for chlorides at higher temperatures)

### Accessories

Optionally, we equip your plate heat exchanger with the following accessories:

- insulations (e.g. mineral insulation material clad with galvanised sheet; other claddings optional)
- inline-filters
- special painting (e.g. sea air resistant paint)
- shroud / drip tray
- earthing lugs
- CIP cleaning system

### Special equipment

- frames made of stainless steel or with stainless steel cladding



< 130	900 mm	995 mm	1050 mm
< 220	1350 mm	1495 mm	1550 mm
< 300	1650 (1950) mm	1995 mm	2050 mm
< 500	2750 mm	2995 mm	3050 mm
	3750 mm	3995 mm	4050 mm

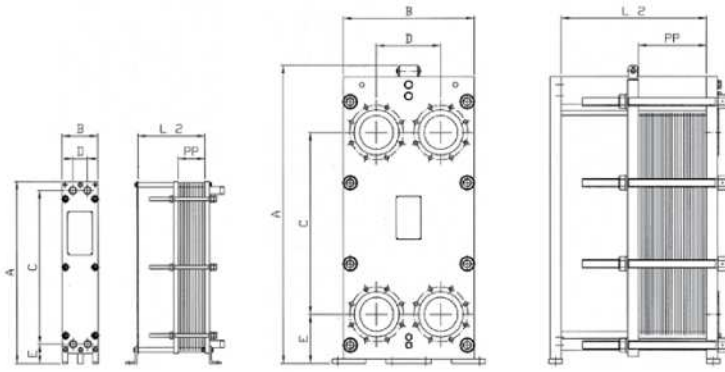
### Connections

MDT-FP plate heat exchangers can be supplied with all common connections (threaded or flange connection, connection with loose flange, moulded rubber part or metal lining; others on request) for any application (industry, building services, chemicals, food). Of course, all common materials as well as welded designs are available.

### Gasketing

Depending on the design and the type, adhesive or non-adhesive (Clip-system) gaskets may be used. As gasket materials, well-known, proven and tested materials are used, such as:

- NBR (nitrile-rubber): universally applicable for aqueous and oily fluids e.g. water/oil-applications
- EPDM (ethylene-propylene-rubber): wide range of applications for many chemical compounds which do not contain mineral oil and grease; also for water and steam applications
- Fluororubber (Viton): extremely resistant to chemicals and organic solvents, also to sulphuric acid and vegetable oils at high temperatures
- other materials on request



**Dimensions**



frame / pressure rating	max. pressure range bar	max. number of plates	surface / plate m <sup>2</sup>	A	B	C	D	E	L2	PP	connections	max. surface m <sup>2</sup>
				mm	mm	mm	mm	mm	mm	mm		
FP 04	16	125	0,04	460	160	336	65	85	150-600	pcs. x 2,4	1"	5
FP 08	16	150	0,08	800	160	675	65	85	150-600	pcs. x 2,4	1"	12
FP 14	16	200	0,14	837	310	590	135	132	250-1000	pcs. x 2,4	2"	28
FP 20	16	200	0,20	1066	310	819	135	132	250-1000	pcs. x 2,4	2"	40
FP 05	25	150	0,04	470	185	381	70	45	250-1000	pcs. x 2,7	1"	6
FP 09	25	150	0,08	765	185	676	70	45	250-1000	pcs. x 2,7	1"	12
FPDW 05	16	150	0,04	470	185	381	70	45	250-1000	pcs. x 2,9	1"	6
FP 10	25	200	0,10	733	310	494	126	128	250-1000	pcs. x 2,9	2"	20
FP 16	25	200	0,16	933	310	694	126	128	250-1000	pcs. x 2,9	2"	30
FP 22	25	200	0,21	1182	310	894	126	128	250-1000	pcs. x 2,9	2"	45
FPDW 16	25	200	0,16	933	310	694	126	128	250-1000	pcs. x 3,1	2"	30
FP 19	16	500	0,19	1080	440	650	202	200	500-2500	pcs. x 3,1	DN 80	100
FPDW 19	16	500	0,19	1080	440	650	202	200	500-2500	pcs. x 3,1	DN 80	100
FP 205	25	500	0,21	1160	480	719	225	204	500-2500	pcs. x 3,1	DN 100	105
FP 31	25	500	0,30	1332	480	894	225	204	500-3000	pcs. x 3,1	DN 100	150
FP 40	25	500	0,40	1579	480	1141	225	204	500-3000	pcs. x 3,1	DN 100	200
FP 50	25	500	0,50	1826	480	1388	225	204	500-3000	pcs. x 3,1	DN 100	250
FP 71	25	500	0,70	2320	480	1882	225	204	500-3000	pcs. x 3,1	DN 100	350
FPDW 205	16	500	0,21	1160	480	719	225	204	500-3000	pcs. x 3,3	DN 100	105
FPDW 31	16	500	0,30	1332	480	894	225	204	500-3000	pcs. x 3,3	DN 100	200
FPDW 50	16	500	0,50	1826	480	1388	225	204	500-3000	pcs. x 3,3	DN 100	250
FPG 31	25	250	0,30	1332	480	894	225	204	500-3000	pcs. x 3,1	DN 100	200
FP 41	25	700	0,40	1470	620	941	290	225	500-4000	pcs. x 3,5	DN 150	280
FP 60	25	700	0,60	1835	620	1306	290	225	500-4000	pcs. x 3,5	DN 150	420
FP 80	25	700	0,80	2200	620	1671	290	225	500-4000	pcs. x 3,5	DN 150	560
FPDW 80	16	700	0,80	2200	620	1671	290	225	500-4000	pcs. x 3,7	DN 150	560
FP 42	25	750	0,40	1470	620	941	290	225	500-4000	pcs. x 3,1	DN 150	315
FP 62	25	750	0,60	1835	620	1306	290	225	500-4000	pcs. x 3,1	DN 150	450
FP 82	25	750	0,80	2200	620	1671	290	225	500-4000	pcs. x 3,1	DN 150	600
FP 112	25	750	1,15	2687	620	2157	290	225	500-4000	pcs. x 3,1	DN 150	840
FP 405	25	700	0,41	1380	760	770	395	285	500-4000	pcs. x 3,1	DN 200	300
FP 70	25	700	0,70	1740	760	1130	395	285	500-4000	pcs. x 3,1	DN 200	355
FP 100	25	700	1,00	2100	760	1490	395	285	500-4000	pcs. x 3,1	DN 200	700
FP 130	25	700	1,30	2460	760	1850	395	285	500-4000	pcs. x 3,1	DN 200	910
FPDW 100	16	700	1,00	2100	760	1490	395	285	500-4000	pcs. x 3,3	DN 200	700
FP 81	25	800	0,80	1930	980	1100	480	365	1780-5280	pcs. x 3,8	DN 300	640
FP 120	25	800	1,20	2320	980	1490	480	365	1780-5280	pcs. x 3,8	DN 300	960
FP 160	25	800	1,60	2710	980	1879	480	365	1780-5280	pcs. x 3,8	DN 300	1280
FP 190	25	800	1,90	3100	980	2267	480	365	1780-5280	pcs. x 3,8	DN 300	1520
FP 150	25	800	1,50	2500	1370	1466	672	480	1980-5980	pcs. x 4,1	DN 500	1600
FP 200	25	800	2,00	2855	1370	1822	672	480	1980-5980	pcs. x 4,1	DN 500	1600
FP 250	25	800	2,50	3211	1370	2178	672	480	1980-5980	pcs. x 4,1	DN 500	2000
FP 300	25	800	3,00	3567	1370	2534	672	480	1980-5980	pcs. x 4,1	DN 500	2400

FP gasketed / bolted PHE (standard design) · FPDW safety PHE (double-wall plate design) · FPG semi welded PHE (welded cassettes)  
 More types and sizes on request · Technical changes reserved · pcs. = number of plates